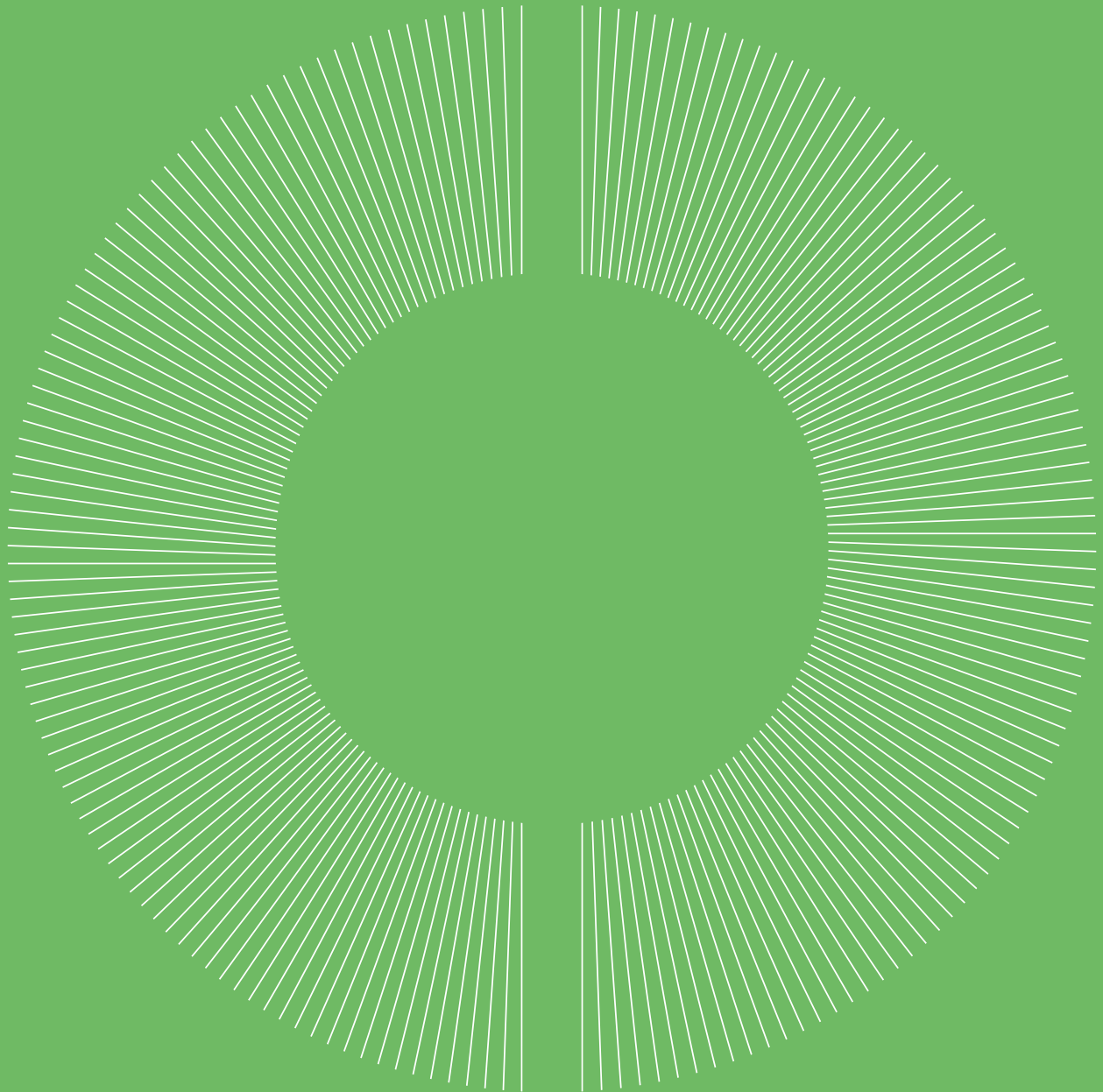


# Schroder International Selection Fund Healthcare Innovation



# Schroder ISF\* Healthcare Innovation is a global equity portfolio that gives investors the opportunity to participate in a theme that is important to all of us – our health. A new wave of innovation is transforming healthcare across its various strands. And the benefits are clear.

Please refer to the fund prospectus for the full investment objective and policy.

## Strategic Capabilities



### Alpha Equity

Targeting higher active equity

Learn more at [schroders.com/en/strategic-capabilities/](https://www.schroders.com/en/strategic-capabilities/)

“  
We believe it’s an exciting time to be investing in healthcare. We are at the start of a transformational shift in knowledge and technology.  
”

## Why invest?

Across the world, we are living longer – this is due to rapid advances in healthcare science, new procedures and better use of data science and computing power. At the same time, an increasing focus on healthy living and improved well-being has never been more in the spotlight. Although traditionally seen as a source of relatively defensive growth, the rapid pace of change across the healthcare sector has transformed it into a diverse pool of rich growth opportunities.

## Risk Considerations

Your capital is at risk when investing. Past Performance is not a guide to future performance and may not be repeated. Please refer to page 4 of this document for more detail on the key risk considerations associated with this fund

## Highlights

### Broad and deep experience investing in healthcare

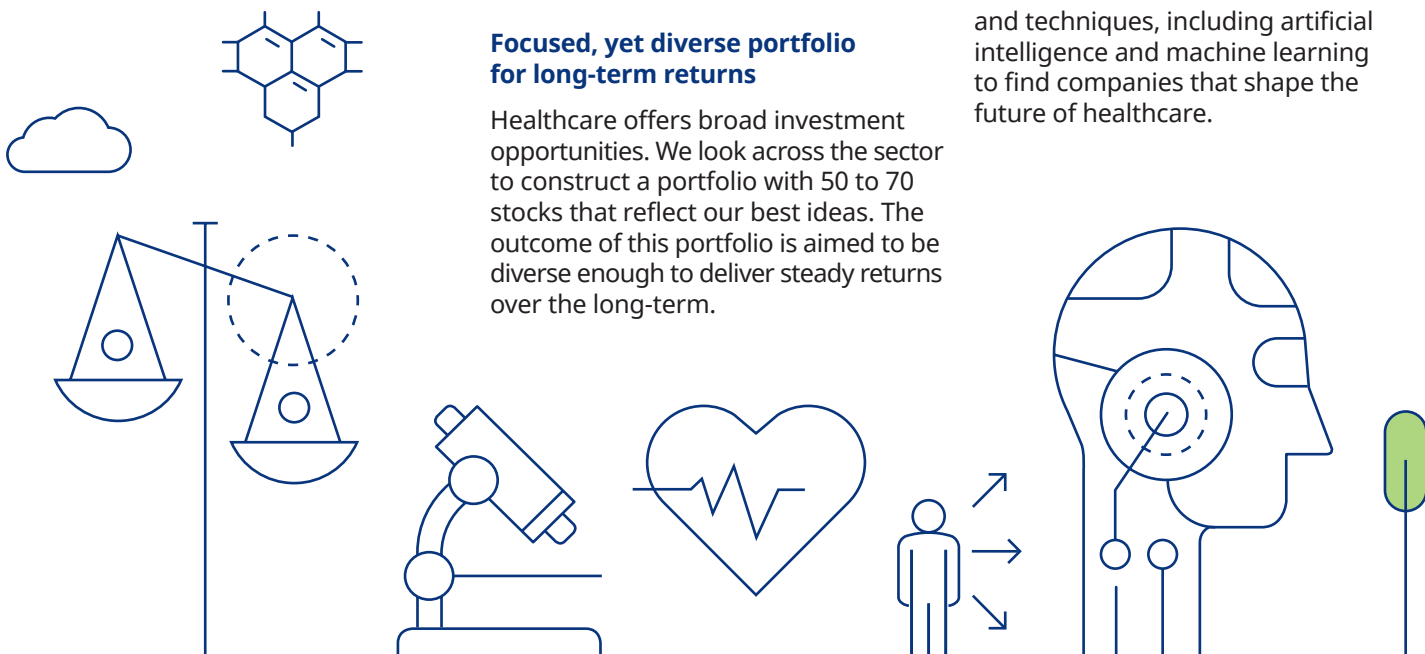
We’ve been managing healthcare portfolios since 2000. Our team of 5 healthcare specialists have over 90 years of combined investment experience and looks after US \$10 bn of healthcare assets.

### Focused, yet diverse portfolio for long-term returns

Healthcare offers broad investment opportunities. We look across the sector to construct a portfolio with 50 to 70 stocks that reflect our best ideas. The outcome of this portfolio is aimed to be diverse enough to deliver steady returns over the long-term.

### Harnessing the power of data

While traditional research is a key component of our process, our Data Insights Unit provide additional insight. A team of 20+ data scientists, statisticians and mathematicians supplement traditional financial data with alternative data sets and techniques, including artificial intelligence and machine learning to find companies that shape the future of healthcare.








\*Schroder International Selection Fund is referred to as Schroder ISF throughout this document.

The fund has the objective of sustainable investment. This means it may have limited exposure to some companies, industries or sectors and may forego certain investment opportunities, or dispose of certain holdings, that do not align with its sustainability criteria chosen by the investment manager. The fund may invest in companies that do not reflect the beliefs and values of any particular investor.

## Building a healthcare innovation fund

### Looking deeper than the tip of the iceberg

Opportunities in healthcare go beyond news headlines. We look broadly across five healthcare sub-sectors to construct our optimal portfolio.

 <p><b>Advanced therapies</b></p> <p>Gene therapy Precision medicines</p>	 <p><b>Med tech</b></p> <p>Robotics Connected healthcare</p>	 <p><b>Healthcare services</b></p> <p>Telehealth Healthcare management</p>	 <p><b>Digital healthcare</b></p> <p>Biosensors and trackers AI</p>	 <p><b>Wellbeing</b></p> <p>Body and fitness Seeing and hearing</p>
--	---	---	--	--

## Key information

**ISIN code** LU1983299246

**Bloomberg code** SHCINNA LX

**Fund launch date** 31 July 2019

**Fund base currency** USD

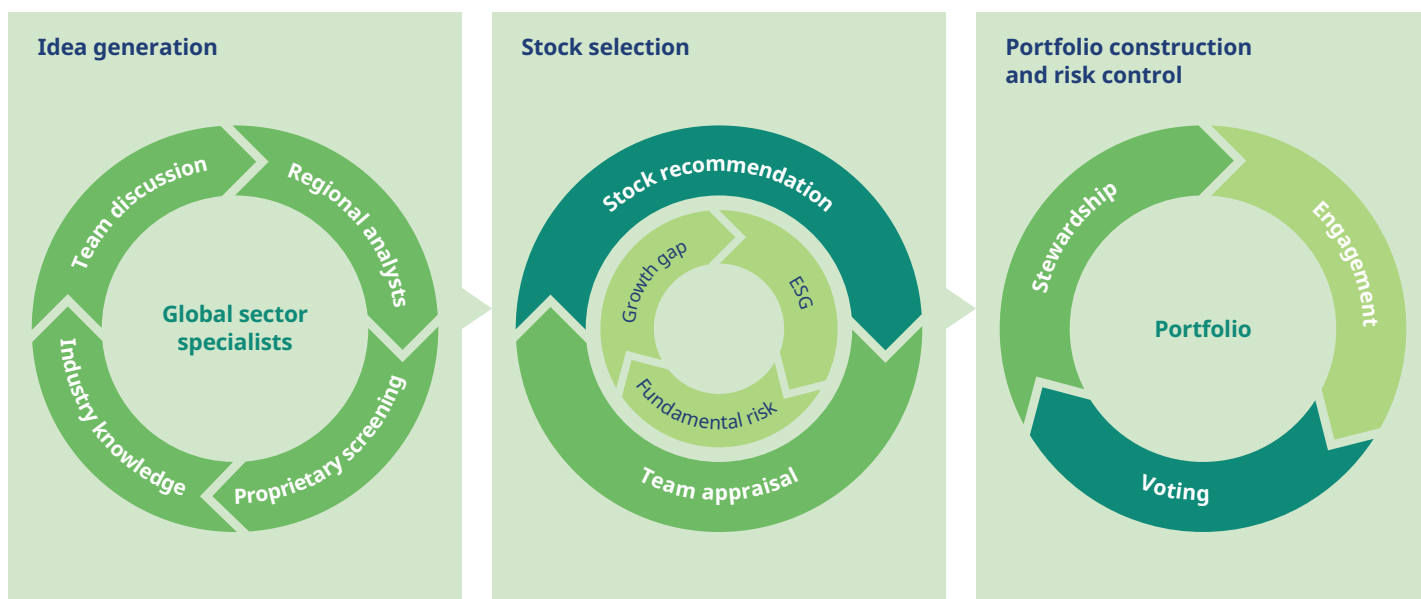
All information in the table above is for the A Accumulation share class, for further share class information please see the prospectus.

## Schroders' awards

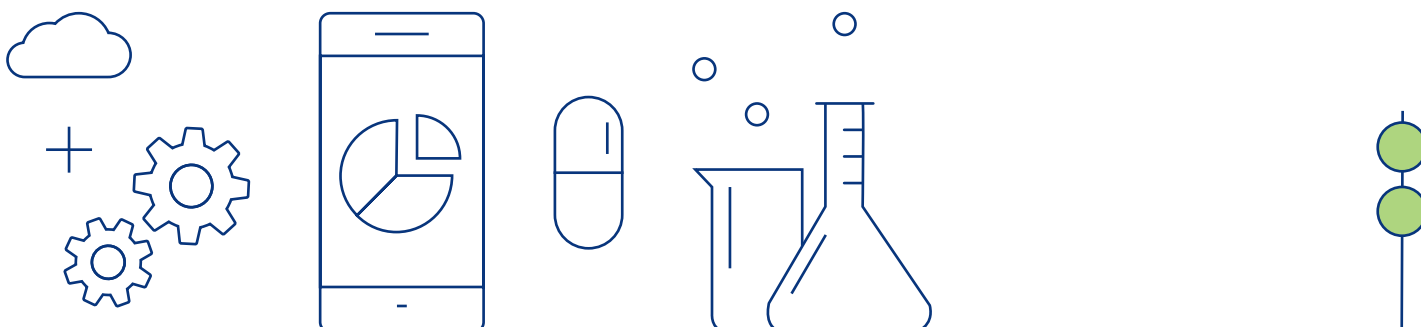


Source: Fitch Ratings, as at 16 June 2021.

## Investment process



Source: Schroders, as at June 2020.



## Risk Considerations

- Concentration risk: The fund may be concentrated in a limited number of geographical regions, industry sectors, markets and/or individual positions. This may result in large changes in the value of the fund, both up or down.
- Currency risk: The fund may lose value as a result of movements in foreign exchange rates.
- Derivatives risk: Derivatives may be used to manage the portfolio efficiently. A derivative may not perform as expected, may create losses greater than the cost of the derivative and may result in losses to the fund.
- IBOR risk: The transition of the financial markets away from the use of interbank offered rates (IBORs) to alternative reference rates may impact the valuation of certain holdings and disrupt liquidity in certain instruments. This may impact the investment performance of the fund.
- Liquidity risk: In difficult market conditions, the fund may not be able to sell a security for full value or at all. This could affect performance and could cause the fund to defer or suspend redemptions of its shares.
- Operational risk: Operational processes, including those related to the safekeeping of assets, may fail. This may result in losses to the fund.
- Performance risk: Investment objectives express an intended result but there is no guarantee that such a result will be achieved. Depending on market conditions and the macro economic environment, investment objectives may become more difficult to achieve.
- Sustainability risk: The fund has environmental and/or social characteristics. This means it may have limited exposure to some companies, industries or sectors and may forego certain investment opportunities, or dispose of certain holdings, that do not align with its sustainability criteria. Therefore, the fund may underperform other funds that do not apply similar criteria. The fund may invest in companies that do not reflect the beliefs and values of any particular investor.
- Counterparty risk: The fund may have contractual agreements with counterparties. If a counterparty is unable to fulfil their obligations, the sum that they owe to the fund may be lost in part or in whole.
- Higher volatility risk: The price of this fund may be volatile as it may take higher risks in search of higher rewards.
- Market risk: The value of investments can go up and down and an investor may not get back the amount initially invested.

## Important Information

This document does not constitute an offer to anyone, or a solicitation by anyone, to subscribe for shares of Schroder International Selection Fund (the “Company”). Nothing in this document should be construed as advice and is therefore not a recommendation to buy or sell shares. An investment in the Company entails risks, which are fully described in the prospectus.

Subscriptions for shares of the Company can only be made on the basis of its latest Key Investor Information Document and prospectus, together with the latest audited annual report (and subsequent unaudited semi-annual report, if published), copies of which can be obtained, free of charge, from Schroder Investment Management (Europe) S.A.

For Luxembourg, these documents can be obtained in English at [www.schroders.lu](http://www.schroders.lu).

Schroders may decide to cease the distribution of any fund(s) in any EEA country at any time but we will publish our intention to do so on our website, in line with applicable regulatory requirements.

The fund has environmental and/or social characteristics within the meaning of Article 9 of Regulation (EU) 2019/2088 on Sustainability-related Disclosures in the Financial Services Sector (the “SFDR”). For information on sustainability-related aspects of this fund please go to [www.schroders.com](http://www.schroders.com).

Any reference to sectors/countries/stocks/securities are for illustrative purposes only and not a recommendation to buy or sell any financial instrument/securities or adopt any investment strategy. Past Performance is not a guide to future performance and may not be repeated. The value of investments and the income from them may go down as well as up and investors may not get back the amounts originally invested. Exchange rate changes may cause the value of investments to fall as well as rise. Schroders has expressed its own views and opinions in this document and these may change. Schroders will be a data controller in respect of your personal data. For information on how Schroders might process your personal data, please view our Privacy Policy available at [www.schroders.com/en/privacy-policy/](http://www.schroders.com/en/privacy-policy/) or on request should you not have access to this webpage.

A summary of investor rights may be obtained from <https://www.schroders.com/en/lu/private-investor/footer/complaints-handling/>.

For your security, communications may be taped or monitored. Issued by Schroder Investment Management (Europe) S.A., 5, rue Höhenhof, L-1736 Senningerberg, Luxembourg. Registration No B 37.799. 603764.



EST. 1804

**Schroder Investment Management (Europe) S.A.**  
5, rue Höhenhof, 1736 Senningerberg, Luxembourg  
T +352 341 342 444

 [schroders.com](http://schroders.com)

 @schroders